



Profile Cylinder | ISO 15552



Profile Cylinder | ISO 15552

Technical information	
Diameter	Ø32 - Ø40 - Ø50 - Ø63 - Ø80 - Ø100 - Ø125 mm
Stroke	25 - 50 - 80 - 100 - 125 - 160 - 200 - 250 - 320 - 400 - 500 - 600 - 700 - 800 - 900 - 1000 mm
Medium	Air
Pressure range	1 ... 10 bar
Temperature range	-20°C ... +80°C FPM version 0°C ... +150°C
Below 0°C air has to be dried.	

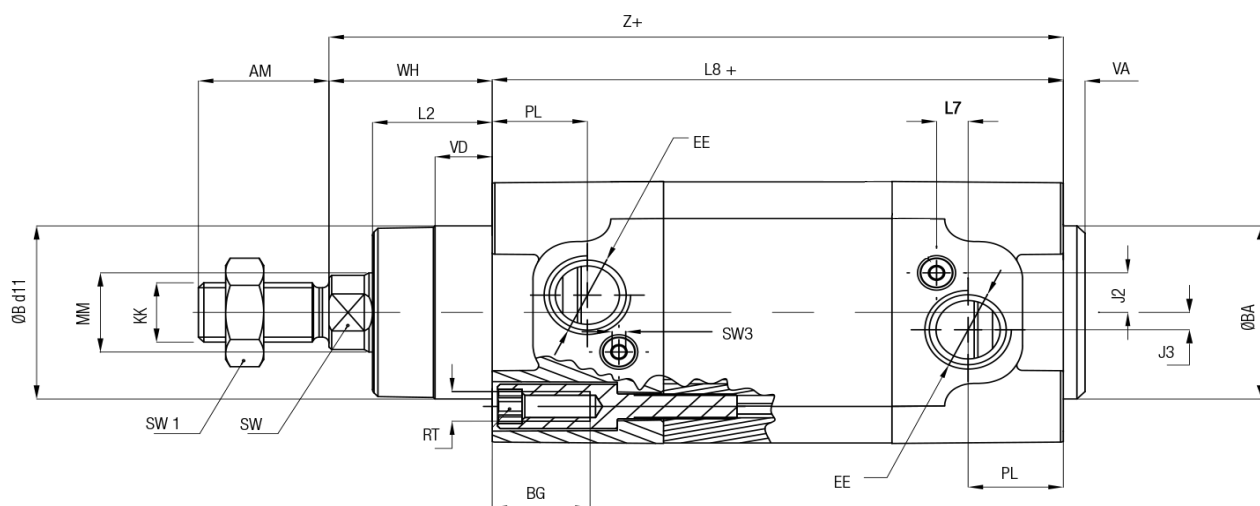
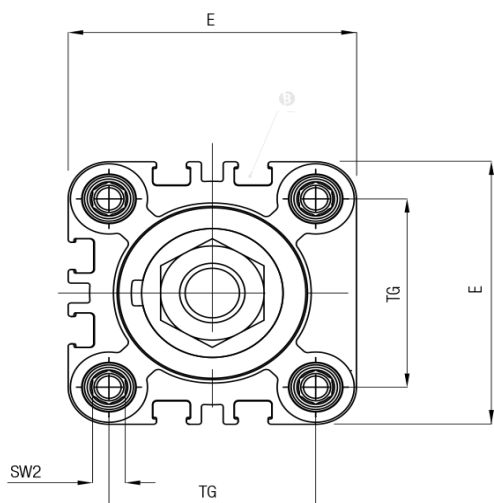
Materials	
Tube	Anodized aluminum
Heads	Die-cast aluminum
Piston	Aluminum
Piston rod	Chromed steel
Guide bushing	Sintered bronze
Seals	PUR, NBR/FPM (depending on type)

H	I	F	V	32 / 80	Ex	
				DIAMETER	STROKE	OPTIONS
				32	25 320	Ex ATEX version
				40	40 400	
				50	50 500	
				63	80 600	
				80	100 700	
				100	125 800	
				125	160 900	
					200 1000	
					250	
VERSION						
WITHOUT Standard seals						
R Stainless steel piston rod (not available for type HEF)						
K FPM Piston (not available for type HEF)						
RK FPM Piston and stainless steel piston rod (not available for type HEF)						
V FPM seals(not available for type HEF)						
RV Stainless steel piston rod and FPM seals = high temperature version (not available for type HEF)						
FUNCTION						
E Single acting (max. stroke: 100 mm)						
I Double acting						
B Double acting, through piston rod						



HEF

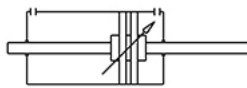
page 82



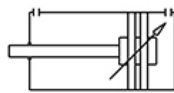
Ø [mm]	ØB d11	VD	VA	L2	WH	MM	SW	KK	AM	SW1	Z	LB	BG	RT	SW2	E	TG	EE	PL	J3
Ø32	30	10	4	20	26	12	10	M10x1,25	22	17	145	119	18	M6	6	46	32,5	G1/8	18	4
Ø40	35	10,5	4	22	30	16	13	M12x1,25	24	19	160	130	18	M6	6	54	38	G1/4	17,5	3,5
Ø50	40	11,5	4	28	37	20	17	M16x1,5	32	22	168	131	20	M8	8	64	46,5	G1/4	20,5	7
Ø63	45	15	4	29	37	20	17	M16x1,5	32	22	183	146	20	M8	8	74	56,5	G3/8	22	8
Ø80	45	15,7	4	35	46	25	22	M20x1,5	40	30	199	153	19	M10	6	94	72	G3/8	22	11
Ø100	55	19,2	4	38	51,5	25	22	M20x1,5	40	30	214,5	163	19	M10	6	111	89	G1/2	26	9



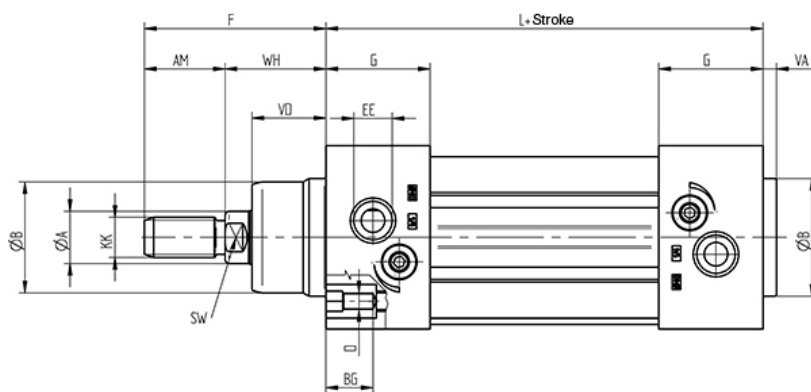
HIF/HBF



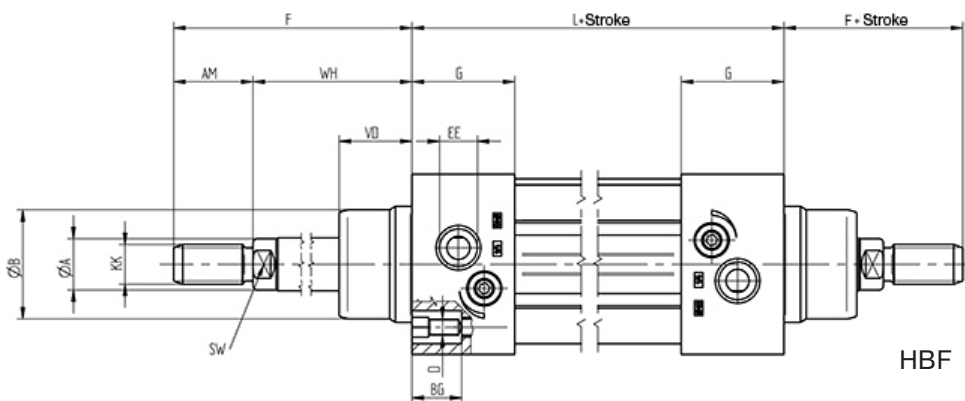
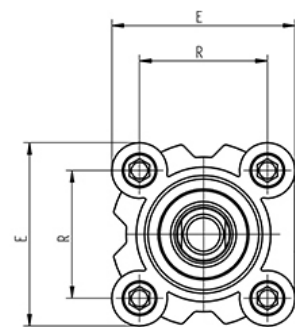
HBF



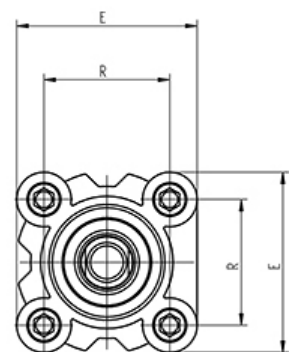
HIF



HIF



HBF



Ø [mm]	A	B	D	E	F	G	L	R	AM	BG	EE	KK	SW	VA	VD	WH
Ø32	12	30	M6	47	48	26,5	94	32,5	22	16	G1/8	M10x1,25	10	4	18	26
Ø40	16	35	M6	54,5	54	31	105	38	24	16	G1/4	M12x1,25	13	4	22	30
Ø50	20	40	M8	65	69	31	106	46,5	32	16	G1/4	M16x1,5	17	4	25,5	37
Ø63	20	45	M8	75	69	33,5	121	56,5	32	16	G3/8	M16x1,5	17	4	26	37
Ø80	25	45	M10	93	86	40	128	72	40	17	G3/8	M20x1,5	22	4	32	46
Ø100	25	55	M10	110	91	40,5	138	89	40	17	G1/2	M20x1,5	22	4	38	51
Ø125	32	60	M12	134	119	47	160	110	54	20	G1/2	M27x2	27	6	46	65



Profile Tandem Cylinder | ISO 15552

page 84

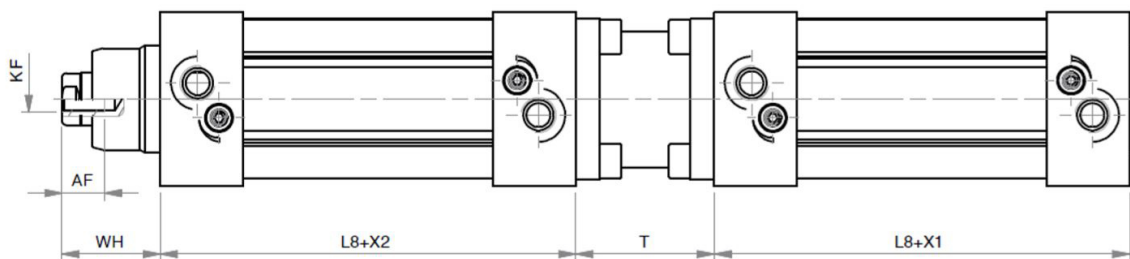
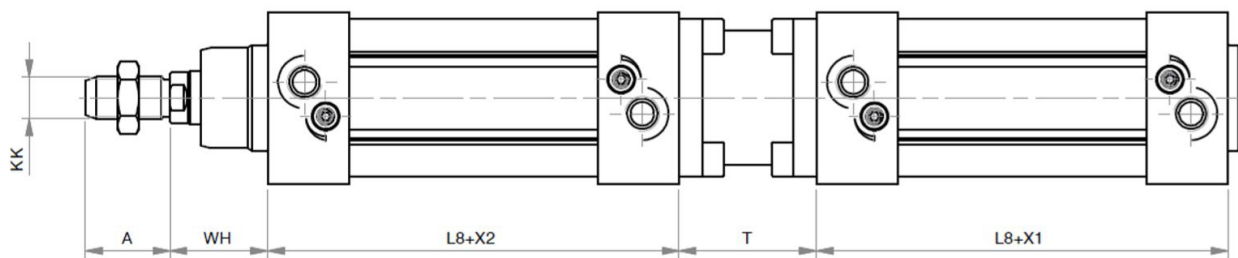
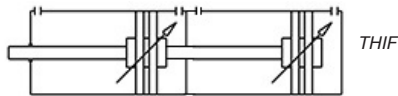
Technical information	
Diameter	32 - Ø40 - Ø50 - Ø63 - Ø80 - Ø100 - Ø125 mm
Stroke	25 - 50 - 80 - 100 - 125 - 160 - 200 - 250 - 320 - 400 - 500 - 600 - 700 - 800 - 900 - 1000 mm
Medium	Air
Pressure range	1 ... 10 bar
Temperature range	-20°C ... +80°C
	Below 0°C air has to be dried.

Materials	
Tube	Anodized aluminum
Heads	Die-cast aluminum
Piston	Aluminum
Piston rod	Chromed steel
Guide bushing	Sintered bronze
Seals	PUR, NBR

T H I F				32 / 2 X		80 Ex	
FUNCTION				DIAMETER	QUANTITY OF CYLINDERS	STROKE	OPTIONS
T Double acting tande				32	2	25	Ex ATEX version
				40	3	40	
				50	4	50	
				63		80	
				80		100	
				100		125	
				125		160	
						200	
						250	
						320	
		400					
		500					
		600					
		700					
		800					
		900					
		1000					



THIF



X1, X2: Stroke

Ø [mm]	A	AF	KF	KK	L8	T	WH
Ø32	22	12	M6	M10x1,25	94	39	26
Ø40	24	12	M8	M12x1,25	105	45	30
Ø50	32	16	M8	M16x,15	106	52	37
Ø63	32	16	M10	M16x1,5	121	53	37
Ø80	40	20	M10	M20x1,5	128	65	46
Ø100	40	20	M12	M20x1,5	138	77	51
Ø125	54	32	M16	M27x2	160	93	65

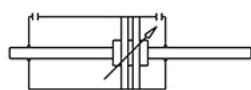


Technical information	
Diameter	32 - Ø40 - Ø50 - Ø63 - Ø80 - Ø100 - Ø125 mm
Stroke	25 - 50 - 80 - 100 - 125 - 160 - 200 - 250 - 320 - 400 - 500 - 600 - 700 - 800 - 900 - 1000 mm
Medium	Air
Pressure range	1 ... 10 bar
Temperature range	-20°C ... +80°C FPM version 0°C ... +150°C
Below 0°C air has to be dried.	

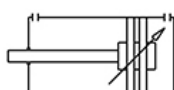
Materials	DILA	DIL, DBL
Tube	Anodized aluminum	Anodized aluminum
Heads	Die-cast aluminum	Die-cast aluminum
Piston	Aluminum	Technopolymer
Piston rod	Chromed steel	Chromed steel
Guide bushing	Sintered bronze	Sintered bronze
Seals	PUR, NBR	PUR, NBR

D	I	L	V	32 / 80
				DIAMETER
				32
				40
				50
				63
				80
				100
				125
				STROKE
				25
				40
				50
				80
				100
				125
				160
				200
				250
				320
				400
				500
				600
				700
				800
				900
				1000
VERSION				
WITHOUT Standard seals				
A Enforced piston				
R Stainless steel piston rod				
V FPM seals				
FUNCTION				
I Double acting				
B Double acting, through piston rod				

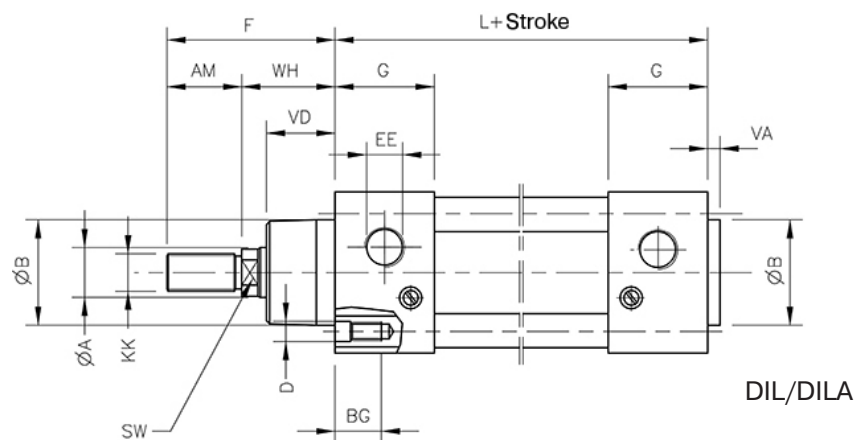
DIL/DILA/DBL



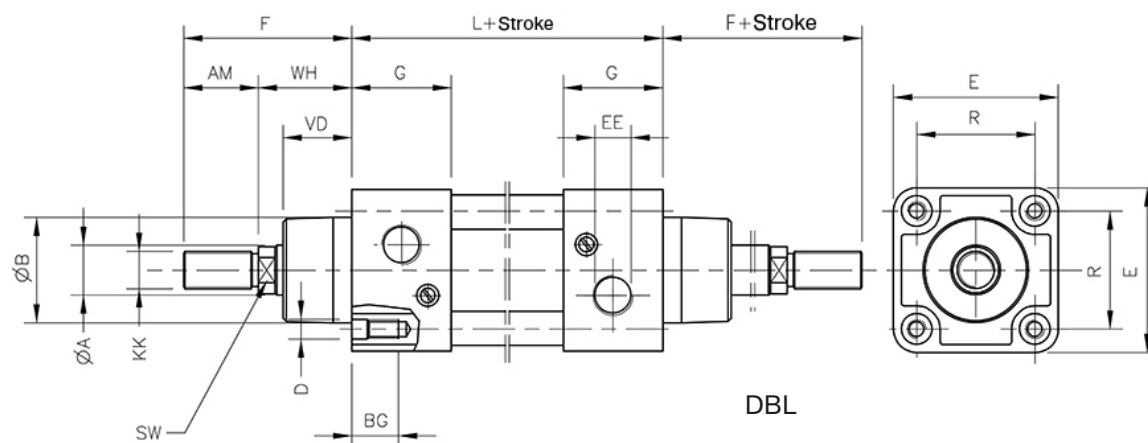
DBL



DIL/
DILA



DIL/DILA



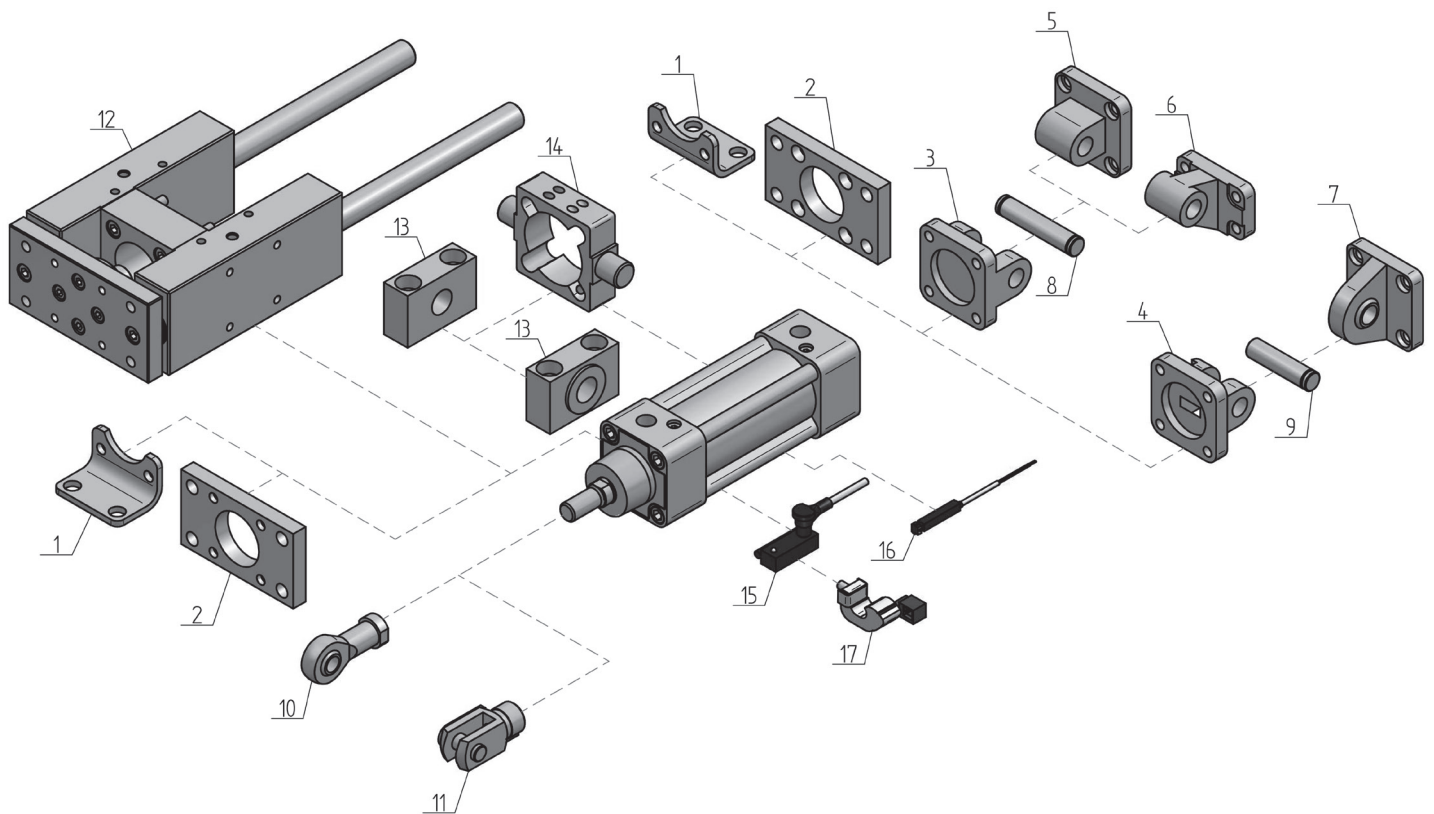
DBL

Ø [mm]	A	B	D	E	F	G	L	R	AM	BG	EE	KK	SW	VA	VD	WH
Ø32	12	30	M6	47	48	28	94	32,5	22	16	G1/8	M10x1,25	10	4	20	26
Ø40	16	35	M6	53	54	31,5	105	38	24	16	G1/4	M10x1,25	13	4	22	30
Ø50	20	40	M8	65	69	31,5	106	46,5	32	16	G1/4	M16x1,5	16	4	28	37
Ø63	20	45	M8	75	69	35	121	56,5	32	16	G3/8	M16x1,5	16	4	28	37
Ø80	25	45	M10	95	86	36	128	72	40	16	G3/8	M20x1,5	21	4	34	46
Ø100	25	55	M10	115	91	41	138	89	40	16	G1/2	M20x1,5	21	4	38	51
Ø125	32	60	M12	140	119	45	160	110	54	20	G1/2	M27x2	27	5	50	65



Accessories Profile Cylinder | ISO 15552

page 88



Part	Type	Description	Page
1	DL	Foot mounting	136
2	DF	Flange	135
3	DG	Female hinge	137
4	DGS	Narrow female hinge	137
5	DH	Male hinge	138
6	DW	Square hinge	140
7	DKL	Male hinge with ball joint	140
8	DC	Pin for hinge	141
9	DCS	Pin for narrow hinge	141
10	UK	Rod eye with internal thread	130
11	UV	Clevis with lockable pin	129
12	DHS/DHSL	Guide unit with plain bearing	150
12	DHG/DHGL	Guide unit with ball bearings	151
13	DSL	Support for intermediate hinge	136
14	DS	Intermediate hinge for cylinder of the D-series	139
14	DP	Intermediate hinge for cylinder of the H-series	139
15	SM	REED switch	145
16	SKR/SKH	REED / PNP switch	144
17	DXS	Fastener for SKR and SKH switch	146